



SUNIL HEALTHCARE LIMITED

CIN: L24302DL1973PLC189662

Vijay Tower, 38E/252-A, Shahpur Jat, Panchsheel park commercial complex, New Delhi-110049

THE CORPORATE SOCIAL RESPONSIBILITY POLICY

(Updated after incorporating the Amendment to the CSR Policy on August 13, 2018)



Sanitation Activity



Donation to Old Age Homes



Donation to Hospitals



Donation to School



"We value the partnerships we build with the communities around our units. For us Corporate Social Responsibility is Corporate Social Relationship."

-Anil Khaitan, Chairman cum Managing Director, Sunil Healthcare Limited

"CSR in SHL is a deeply ingrained belief of doing business by adding value to the community and society on a sustainable basis through dedicated policies, institutional setup and engagement process to promote inclusive growth."

-Ishan Khaitan, President – Operation & Marketing, Sunil Healthcare Limited

"We are committed towards improving the quality of lives of people in the communities in which we operate. We wish to be a company which is respected by people for its commitment towards social causes."

-Kahaan Khaitan, Sr. Vice President – Procurement, Sunil Healthcare Limited

CHANGING LIVES THROUGH CORPORATE SOCIAL RESPONSIBILITY (CSR)

Corporate Social Responsibility (CSR) is termed as a way of 'giving back' to the society through many different ways by positively impacting on their lives and environment.

OUR VISION/CSR VISION

"Create value and make our ecosystem proud"

To uphold and contribute to the realization of a sustainable society by balancing our business activities with nature using the resources we have in making a real and sustainable difference.

OUR CSR MISSION

It's a commitment to ourselves in maintaining a firm philosophy and conviction in enhancing the living conditions of the society and environment around us.

OUR OBJECTIVE

The main objective of the CSR policy is to lay down guidelines for the Company to make CSR a business process for sustainable development of the society at large. It aims to enhance and implement the society welfare measures by the Company in a well structural manner on short and long term basis with a vision of making SHL to act as Good Corporate Citizen. CSR is an evolving concept at SHL, it's been there since incorporation, we have promised to ourselves to take up the responsibility of ensuring a healthy ecosystem. SHL's CSR program is anchored on the continuing commitment to improve the quality of living conditions and opportunities for the differently able without regard to their faith, origin or gender.



OUR CSR POLICY

THE SHL CSR POLICY IS BROADLY FRAMED TAKING INTO ACCOUNT THE FOLLOWING MEASURES:-

The Policy recognizes that corporate social responsibility is not merely compliance; it is a commitment to support initiatives that measurably improve the lives of underprivileged by one or more of the following focus areas as notified under schedule VII of Section 135 of the Companies Act 2013 and Companies (Corporate Social Responsibility Policy) Rules 2014.

1. To eradicate hunger, poverty and malnutrition, promoting preventive health care and sanitation including contributing to the Swachh Bharat Kosh set-up by the Central Government for promoting of sanitation and making available safe drinking water.

1A "Promoting sanitation by procuring, distributing sanitary pads amongst the Girls/women and promoting/creating awareness on women hygiene, sex education etc. " (Inserted by Amendment on August 13, 2018).

2. Promoting education, including special education & employment enhancing vocation skills especially among children, women, elderly & the differently unable & livelihood enhancement projects,
3. Promoting gender equality, empowering women, setting up homes & hostels for women & orphans, setting up old age homes, day care centers & such other facilities for senior citizens & measures for reducing inequalities faced by socially & economically backward groups;
4. Ensuring environmental sustainability, ecological balance, protection of flora & fauna, animal welfare, agroforestry, conservation of natural resources & maintaining quality of soil, air & water; including contribution to the Clean Ganga Fund set-up by the Central government for rejuvenation of river Ganga
5. Protection of national heritage, art & culture including restoration of buildings & sites of historical importance & works of art; setting up public libraries; promotion & development of traditional arts & handicrafts;
6. Measures for the benefit of armed forces veterans, war widows & their dependents;
7. Training to promote rural sports, nationally recognized sports, sports & Olympic sports;
8. Contribution to the Prime Minister's National Relief Fund or any other fund set up by the Central Government for socio-economic development & relief & welfare of the Scheduled Castes, the Scheduled Tribes, other backward classes, minorities & women; xii. Contributions or funds provided to technology incubators located within academic institutions, which are approved by the Central Government;
9. Rural development projects, etc.
10. Slum area development.

Explanation :- For the purpose of this item, the term Slum area shall mean any area declared as such by the Central Government or any State Government or any other competent authority under any Law for the time being in force.

TO ATTAIN ITS CSR OBJECTIVES IN A PROFESSIONAL AND INTEGRATED MANNER, THE COMPANY SHALL INITIALLY CONCENTRATE ON THE FOLLOWING AREAS OF DEVELOPMENT:

1. Developing Toilets and *promoting sanitation by procuring, distributing sanitary pads amongst the Girls/women and promoting/creating awareness on women hygiene, sex education etc. " (Amended by Amendment on August 13, 2018).*

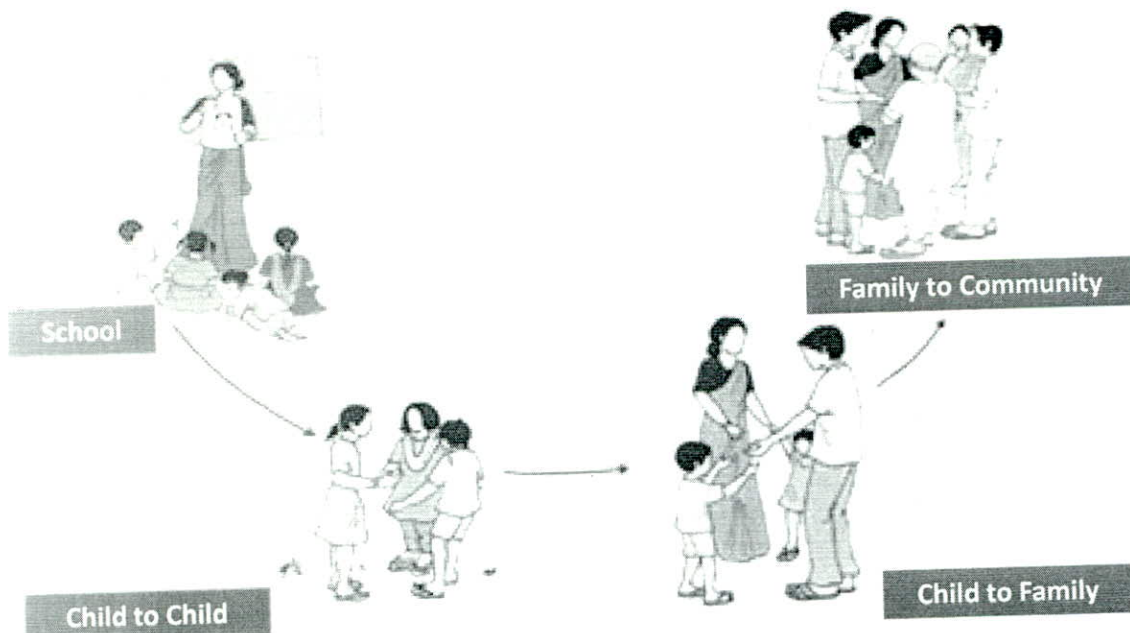
2. Donation to Hospitals for distribution of free medicines



3. Donation to School for education of weaker section of society
4. Donation to old age homes, orphanages etc.

CONCEPT OF SANITATION OF SHL

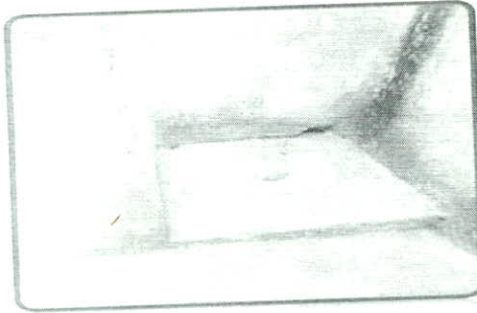
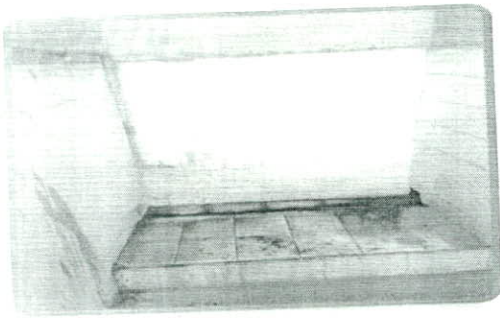
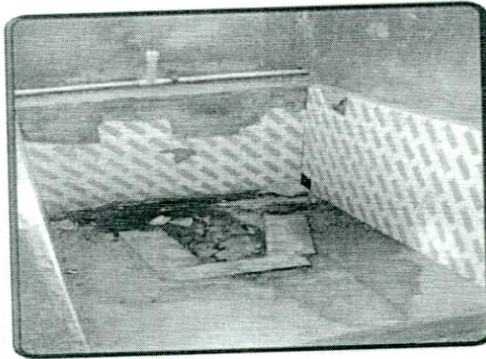
STUDENT AS AGENT OF CHANGE – CHANGING THEMSELVES, FAMILY AND THE COMMUNITY.



We M/s Sunil Healthcare Limited trying to create awareness among the Masses about Girl and boys Child Education, Menstrual Hygiene, Sanitation and Safe Drinking Water and trying to relate how Girl & boys Child education is directly suffering due to bad sanitation facilities, unsafe drinking water and lack of knowledge to obtain the same. Also communicate and advocates for the need to address the fact that most of schools in Alwar District, Rajasthan does not have separate toilets for girls, some schools only have a single toilet that is so unclean and some of the toilet in schools are defunct and not used- and that carries not only the risk of disease but the risk of sexual harassment - that girls opt to drop out of school. This is particularly the case with adolescent girls, who may lack access to a vending machine at school with sanitary napkins during menstruation, and during menstruation days due to unavailability of toilets in the schools they skip the school every month for about 5 or 6 days and later on this results in dropping out of school due to absenteeism, and keeping a pace with studies. There is some observation we found as under:-

- 1 Almost all the toilets and the urinals that were surveyed were found to be in deplorable conditions with lot of filth and fecal matter.
- 2 No information about menstrual hygiene amongst girls in all schools
- 3 No girls friendly toilets any of the schools
- 4 No designated and washing areas in all schools
- 5 Most of the schools had not water connection in the school.
- 6 Availability of safe drinking water (fluoride free) was still a distant dream.
- 7 Lack of cleaning materials vis-a- vis phenyl, soap, brooms was evident in most schools
- 8 There was a perceptible lack of hand hygiene during the serving of MID day meals in most schools

CONDITIONS OF TOILETS IN SCHOOLS AS UNDER



We trying to showcase and relate the issue of sanitation and hygiene with child Education, and if proper Sanitation facilities and hygiene measures are implemented and followed the child can achieve their dreams and become successful in their career and can also play a major role in country development.

SANITATION ACTIVITY

The company's CSR activities are Sanitation work to construct toilets in school of Alwar city. The CSR policy of the Company for the next five Years shall be "To concentrate on Sanitation in the Alwar Dist., Rajasthan." The CSR project shall be known as "Humara Sauchalaya"

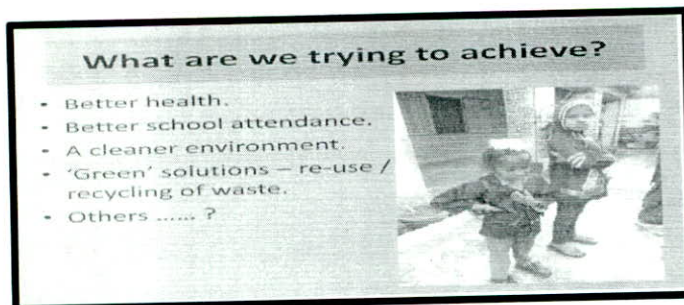
Further, the Company will *promote sanitation by procuring, distributing sanitary pads amongst the Girls/women and promoting/creating awareness on women hygiene, sex education etc.* **This project shall be known as 'SWAYAM' under CSR activities. (Inserted by Amendment on August 13, 2018)**

OUR CSR OBJECTIVES IN RELATION OF SANITATION ACTIVITIES

- To developing toilets and sanitations
- *To promote sanitation by procuring, distributing sanitary pads amongst the Girls/women and promoting/creating awareness on women hygiene, sex education etc. " (Inserted by Amendment on August 13, 2018).*
- To provide the better heath and lower morbidity rates in the population.
- Better school attendance and retention of the children in higher classes
- A cleaner environment
- Green Solutions- re-use / recycling of wastage
- To Provide privacy & comfort to school children specially girl children and female teachers



- To Act as a “ demonstration model/learning tools” for school children and community
- To include behavioral changes in the school children by using toilets and urinals
- Increased awareness of the importance of sanitation and hygiene and the need to develop a more permanent strategy



Corporate Social responsibility has been synonymous with SHL’s core business of pharmaceuticals. SHL aspires to provide access to resources needed for a decent standard of living for the people in its vicinity. SHL spirit of caring and sharing is embedded in its mission statement. Community is the most important stakeholder and is a neighbor for lifetime, with whom SHL has built strong partnerships through a well-conceived basket of community development interventions.

DEVELOPING TOILETS AND SANITATION

How is poverty fought? Well, there are many different approaches that are currently being tried and some may seem more self-explanatory than others. For example, there is micro-lending, education aid, anti-corruption efforts, and attempts to create jobs and industry. But what about sanitation? Specifically, what about the toilets?

Toilets, and the access to toilets and established sanitation standards, are actually a very, very important issue in much of the developing world. The lack of toilets can lead to many serious sanitation problems; exposed fecal matter can lead to any number of a long list of diseases and can cause infection, lead to dysentery, and provided a breeding ground for many parasites.

More than reducing levels of infection and disease, however, the sanitary importance of toilets offers an increased sense of dignity. The people living without toilet access are not all living in rural areas. Many live in city slums and must go about their business without the luxury of privacy. The availability of toilets is even shown to increase the school attendance of teenage girls, who may not go to school during their menstrual cycle. The non-governmental organization Charity Water works to provide clean water and sanitation in the developing world. Increased access to toilets has been one of their goals for years.

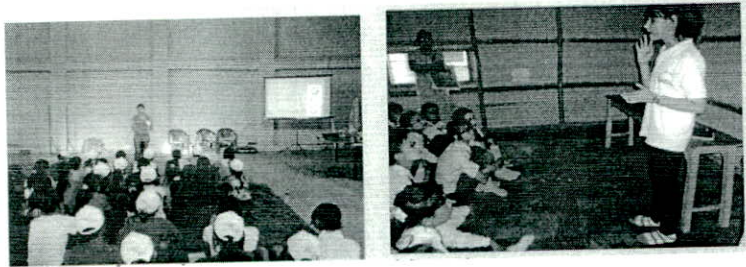
WAY FORWARD BY SHL

- 1 Renovation of the defunct or dysfunctional toilets and urinals.
- 2 Connection of water facility in the toilets with submersible pumps.
- 3 Sensitization and awareness amongst students on the uses of toilet and hand washing. Special programme should be undertaken to orient the school teachers, the school administrator, Panchayat members and Bikash Committee Members on scaling up the water sanitation facility in the schools.





- 4 More information and knowledge to be provide to the student on the aspect of menstrual Hygiene.



- 5 Construction of girl's friendly toilets with the provision of sanitary napkin incinerators specials in the girl's school.



- 6 Allocation of funds for sweepers on regular basis for the cleanliness and maintenance of the toilet and Urinals.
- 7 Provision of sufficient numbers of Dust Bins in the toilet as well as in the schools compound.
- 8 Constructions of designated area for hand washing.
- 9 Do not flush wastage material like paper or cloth in the toilets.
- 10 Damaged Toilet should be repaired immediately.
- 11 System should be established in school to clean the water tank and fit it with water regularly.

DONATION TO HOSPITALS

SHL has a policy of donation, grant and or financial assistance to hospitals, dispensaries, nursing homes, maternity homes, , child welfare centers, clinic, laboratories, mobile medical ambulances, medical and /or surgical equipment and camp and other establishment for giving medical relief to the aged, orphaned, disabled, sick, destitute, abandoned, helpless persons and general public.

DONATION TO SCHOOL

SHL has a policy of donation, grant and /or financial assistance to school, college, hostel, libraries, reading room, lecture hall museums and other establishment and institutions for the development of education and diffusion of



useful knowledge. Provide for and top afford opportunities and facilities in the field of educations by funding and awarding scholarship, prizes, reward, allowances or other financial assistances to the students.

DONATION TO OLD AGE HOMES, ORPHANAGES ETC.

SHL has a policy of donation, grant and /or financial assistance to old age homes, orphanages or other establishment to provide relief to the poor, the destitute, the orphans, the widows, old age person and otherwise provided for them.

STRUCTURE (Amended w.e.f. August 13, 2018)

The Board of Directors of the company has re-constituted a CSR committee on February 12, 2018 due to sad demise of Mr. S.N. Balasubramanian on November 20, 2017. The members of the CSR Committee are as under:-

- 1 Mr. Rakesh Mohan - Chairman of the Committee
- 2 Mr. R C Khurana- Member of the Committee
- 3 Mr. B. P. Srinivasan -Member of the Committee
- 4 Dr. Lata Singh –Member of the Committee

ROLE OF CSR COMMITTEE

The CSR Committee constituted in pursuance of Section 135 of the Companies Act, 2013 shall be required to carry out the following activities:

1. Formulate and recommend to the Board, a Corporate Social Responsibility Policy which shall indicate the activities to be undertaken by the company as specified in Schedule VII of Companies Act 2013;
2. Recommend the amount of expenditure to be incurred on the activities ,and
3. Monitor the Corporate Social Responsibility Policy of the company from time to time.

OUR APPROACH TO IMPLEMENTATION

We will strive to implement the aforesaid CSR activities on our own to the extent possible. At the same time, we recognize need to work in partnership with other players also. This would include:

1. Collaborating with donations to various organizations, which are registered as a Trust or a section 8 Companies under the Companies Act, 2013 or Society or NGOs or any other form of entity incorporated in India that specialize in the aforesaid activities or are engaged in on full time basis for the cause of socio-economic development.
2. Collaborating or pooling resources with other companies to undertake aforesaid CSR activities or as may be approved and allocated by CSR Committee from time to time.

CSR FUNDS

CSR expenditure will include all expenditure, direct and indirect, incurred by the Company on CSR activities undertaken in accordance with the approval of CSR committee. Moreover, any surplus arising from any CSR





activities shall be used for CSR purpose only as elaborated in this policy. Accordingly, any income arising from CSR activities will be netted off from the CSR expenditure and such net amount will be reported as CSR expenditure.

The corpus for the purpose of carrying on the aforesaid activities would include the followings:

- a. 2% of the average Net Profit of the Company during immediately preceding three Financial Years.
- b. Any income arising from CSR activities.
- c. Surplus arising out of CSR activities carried out by the company and such surplus will not be part of business profit of the company.

REPORTING

CSR Committee will provide a status report to the Board on the progress of implementation of the approved CSR activities. It shall be responsibility of Board to review such reports. Report on CSR activities shall also form part of Board's Report.

AMENDMENTS TO THE POLICY

The Board of Directors on its own and/or on the recommendation of CSR committee can amend its policy as and when required deemed fit. Any or all provisions of CSR Policy would be subjected to revision/amendment in accordance with the regulations on the subject as may be issued from relevant statutory authorities, from time to time.

Approved by the board of Directors in their meeting held on 24.05.2014

Amendment to CSR policy was approved by the Board in its meeting held on August 13, 2018

For and on behalf of the Board

SUNIL HEALTHCARE LIMITED

Anil Kumar Khaitan
ANIL KUMAR KHAITAN
CHAIRMAN & MANAGING DIRECTOR
DIN: 00759951

Date:

Place: New Delhi

