

ACCESS TO ALWAR:

AIR

Delhi 163 km. is the nearest airport.

RAIL

Good connection from prominent locations in and around the state. Some important trains connections are: Shatabdi Express (New Delhi-Alwar- Ajmer), Superfast Express (New-Delhi-Alwar-Ajmer), Intercity Express(Jodhpur-Jaipur- Alwar-Delhi) Marudhar Express(Jodhpur-Alwer-Varanasi), Mandore Express(Jodhpur-Alwar-Delhi).

ROAD

Alwar is linked by road to major cities of Rajasthan and To Delhi.

CLIMATE CONDITIONS

<i>Area</i>	<i>44.76 sq.km</i>	
<i>Climate</i>	<i>Mean Max</i>	<i>Mean Min</i>
<i>Summer</i>	<i>37.0 degree C</i>	<i>24.0 degree C</i>
<i>Winter</i>	<i>31.0 degree C</i>	<i>11.0 degree C</i>
<i>Rainfall</i>	<i>62 cms.</i>	
<i>Best Season</i>	<i>September- February</i>	
<i>Clothing</i>	<i>Summer: Light Tropical</i> <i>Winter: Light Wollen</i>	
<i>Languages</i>	<i>Rajasthani, Hindi, English</i>	

PLACES TO VISIT

The Bala Fort:

This huge fort with its ramparts stretching 5 km from north to south and 1.6 km from East to West, stands 304 metres above the city and 595 metres above the sea level. Constructed before the rise of the

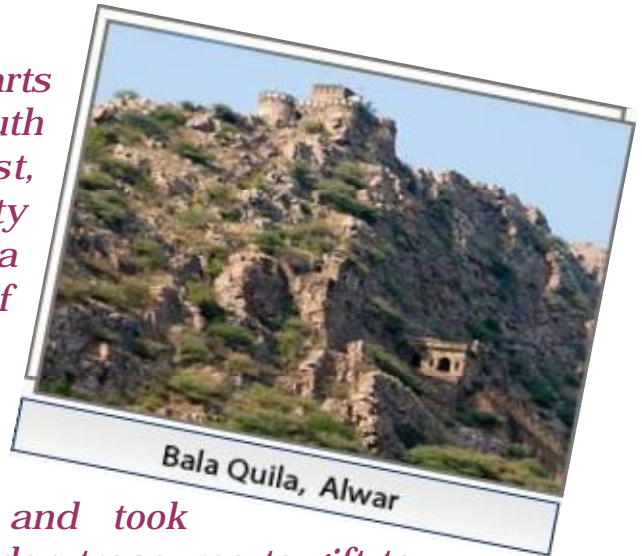
Mughal Empire.

Babar had spent a night at this fort and took away the hidden treasures to gift to his son, Humayun. Akbar's son, Jahangir had also stayed here for some time

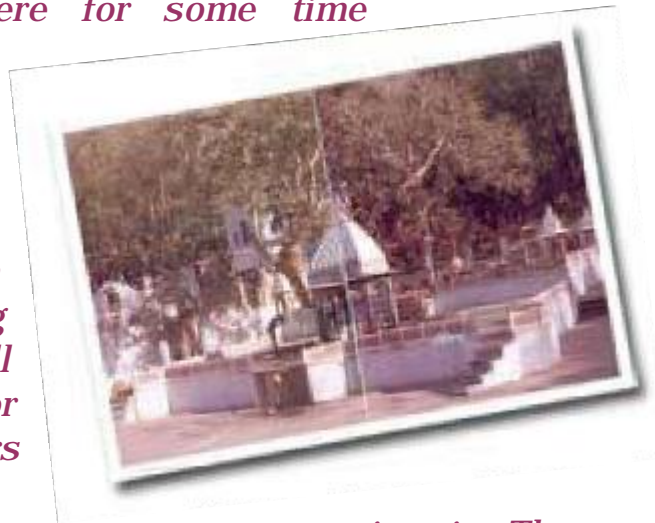
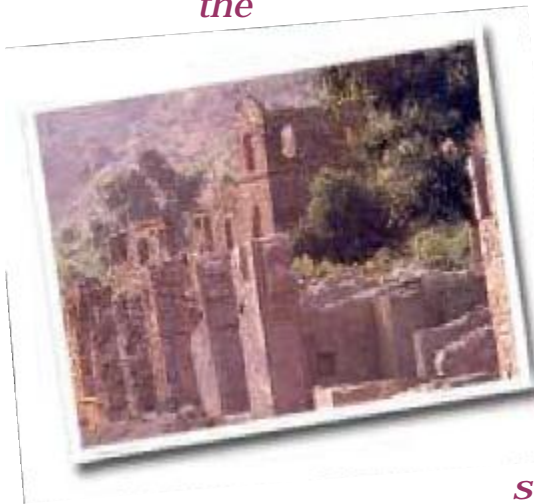
during his exile. The

place where he

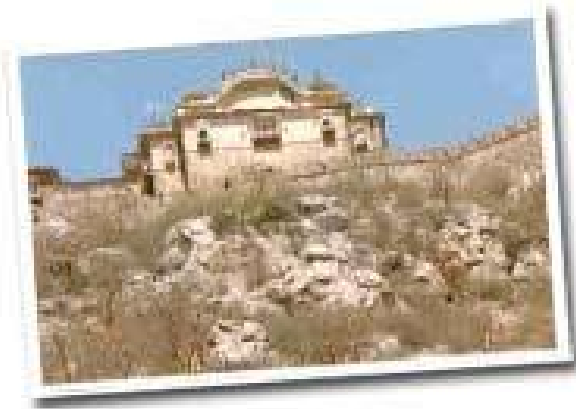
stayed is called Salim mahal. The fort was finally annexed by Maharaja Pratap Singh in 1775 A.D. It is a forbidding structure with 15 large and 51 small towers and 446 openings for musketry, along with 8 huge towers



Bala Quila, Alwar

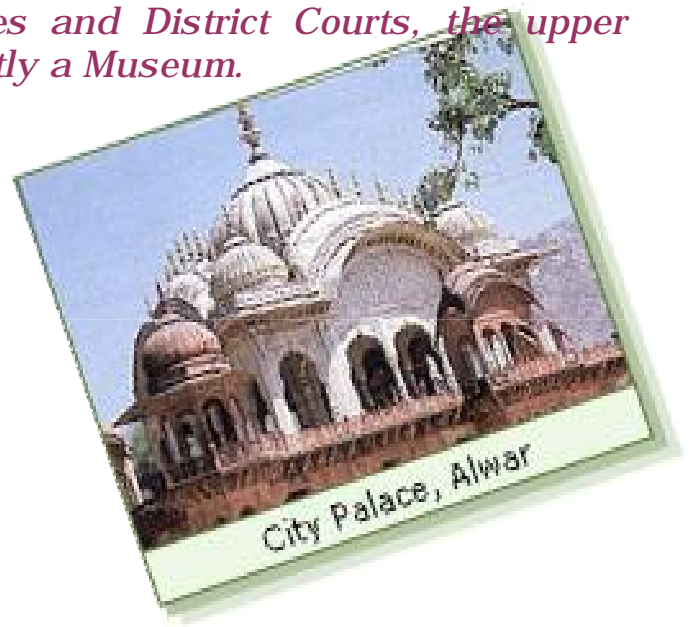
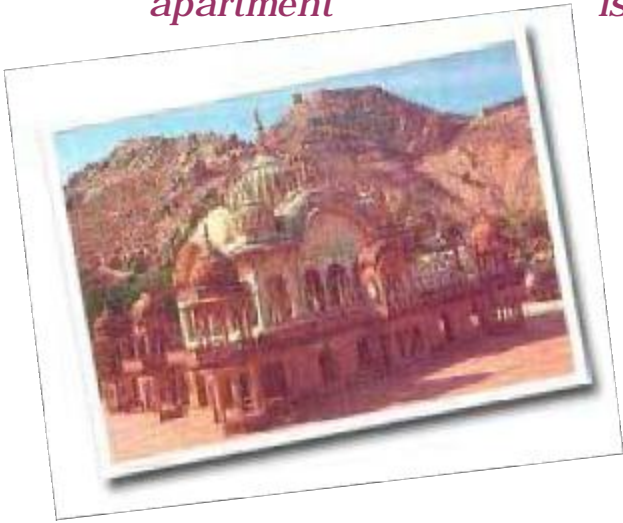


encompassing it. The fort has several gates-jai pole, Suraj pole, Laxman Pole, Chand Pole, Kishan Pole and Andheri Gate. Also there are remains of Jal Mahal, Nikumbh Mahal, Salim Sagar, Suraj Kund, Mousi Rani ki Chhatri, and many temples.



City Palace or Vinay Vilas Mahal :

An 18th century palace harmoniously blending the Rajput and Mughal styles of architecture. While the ground floors have been converted into Government Offices and District Courts, the upper apartment is presently a Museum.



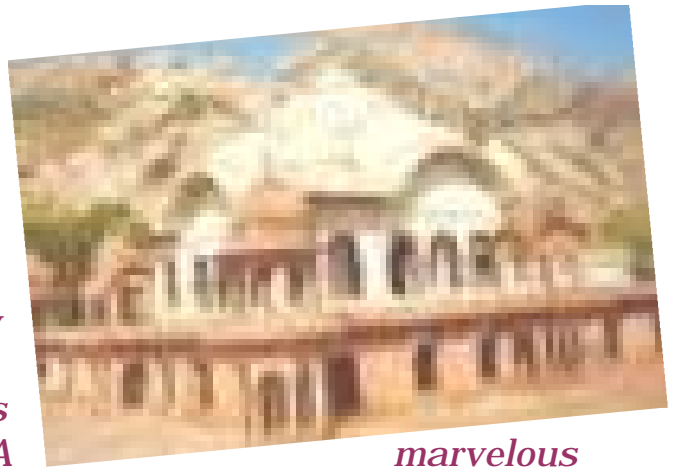
Government Museum:

The museum has the finest collection of Mughal and Rajput painting dating back to the 18th and 19th centuries and some rare ancient manuscripts in Persian, Arabic, Urdu and Sanskrit. 'Gulistan' (the garden of roses), 'Waqiat-IBabri' (Autobiography of Mughal Emperor Babar) and Bostan (the garden of spring) are some of the notable ones amongst the collection. It also has the copy of the great epic 'Mahabharata' painted by the artists of the Alwar School. A rich collection of the Indian Armoury are among other exhibits of the museum



Sagar :

Behind the City Palace is an artificial lake built in 1815 A.D. by Maharaja Vinay Singh with few temples along its banks.



A marvelous chhatri with unusual Bengali roof and arches, also known as the Moosi Maharani Ki Chhatri, is situated in this area Purjan.

Alwar Company Bagh :



Alwar Local Bazar:



Alwar Special Desert:



EXCURSIONS

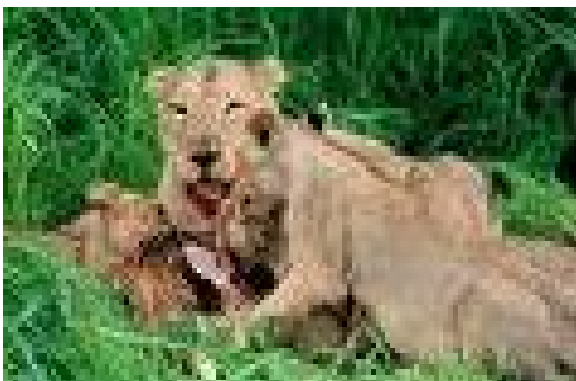


Sariska (37 km)

The 765.80 sq. km. thickly wooded reserve cradled in the picturesque valley of the Aravalis. Established in 1955, it is an



excellent tiger sanctuary under the Project Tiger. The dry deciduous forests of the Reserve are noted for their population of Tiger, Nilgai, Sambhar, Cheetal, four horned antelope and wild boar.



Vijay Mandir Palace(10 km)



A splendid palace, built by Maharaja Jai Singh in 1918 A. D. picturesque lake overlooking the palace makes it a fascinating sight. A fabulous Sita Ram Temple in the palace attracts number of devotees, especially during Ramnavami. One needs prior permission from the Secretary to

visit the palace.

Sariska Palace

A Marvellous Palace was built here by Maharaja Jai Singh in the honour of the Duke of Edinburgh during his visit to the Sanctuary. Presently, it has been converted into a hotel- Sariska Palace. RTDC Hotel Tiger Den also



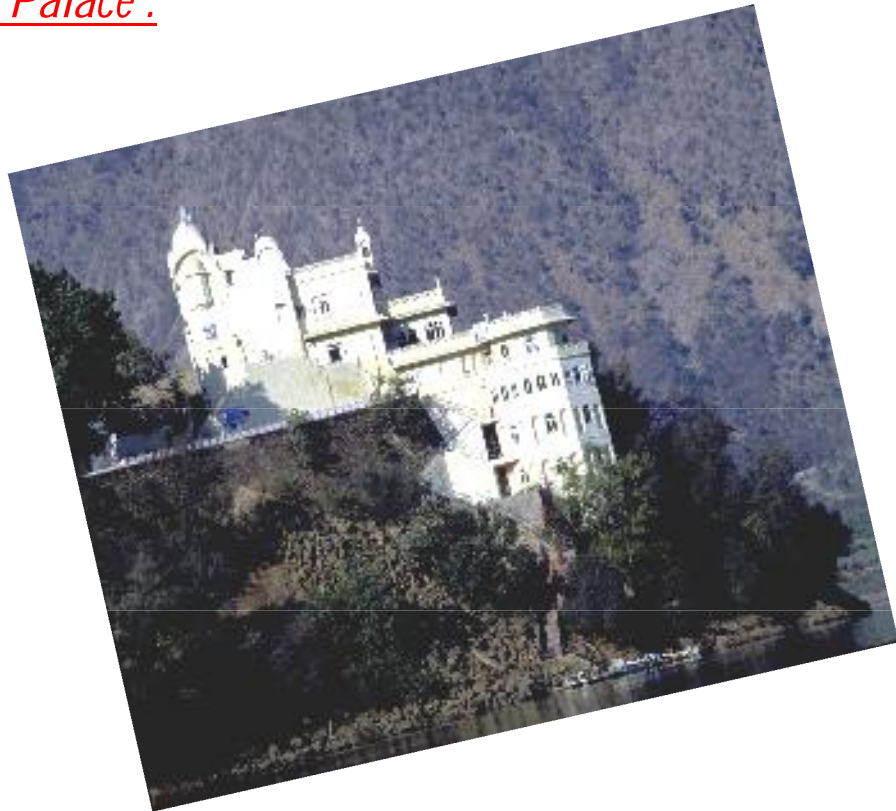
offers excellent accommodation at Sariska. The best time to drive in the sanctuary is from till sunset.

Jai Samand Lake(6 km):

A beautiful artificial lake constructed by Maharaja Jai Singh in 1910 A.D. is a popular spot for outing and picnics. During monsoons, sprawling greenery all around makes it a visual treat. Easily accessible by road from Alwar.



Silised Lake Palace :



EDUCATIONALS

Education Institutions:

The network of Educational Institutions functioning in the district are:

1. Primary and Middle School 3885
2. Secondary and Sr. Higher Secondary School 356
3. Colleges 33
4. Agriculture Research Centre 1
5. Polytechnic College 1
6. I.T.I. 8
7. Law College 1
8. B.Ed. College 4
9. Rajeev Gandhi Pathsala 553

Name of Govt. Colleges & Private Colleges

1. RajRishi College Alwar
2. Babu Shobharam Arts & Law College Alwar
3. Gauri Devi Girls College Alwar
4. Shri Dharm Chand Jain Govt. College Behror
5. Government College Rajgarh
6. Government College Bibirani
7. Government College Govindgarh
8. Government Polytechnic College Alwar

Private Colleges

1. Arya Kanya (Girls) College Alwar
2. Jain Commerce College Alwar
3. Jain B.Ed. College Alwar
4. Arya Mahila B.Ed. College Alwar
5. National College Alwar
6. Shri Krishna Law College Alwar
7. Adarsh Law College Alwar
8. Vardhman Law College Alwar
9. I.E.T. College MIA, Alwar
10. Laxmi Devi Institute of Technology Chikani, Alwar
11. KCRI (I.T.) Girls College Alwar

